



## CHATEAU LA TUILERIE BORDEAUX ROUGE 2019/\$19.99



### DESCRIPTION

The Graves, (the original name for the Pessac Leognan appellation) takes its name from the unique soils that consist of deep layers of gravel and stone.

Graves is located just to the south and east of Bordeaux city on the left bank of the Garonne River and not too far from Sauternes. Graves is a naturally warm climate appellation, due to its proximity to the city. The Graves appellation can receive more precipitation than its neighboring appellations as well, which alters its climate. However, it is the gravel, rocks, and stone-filled terroir in the vineyards that give the appellation its name and identity.

To get an idea of how the soil and terroir of Graves compare to the other important appellations in Bordeaux; The terroir and soil of Bordeaux Graves is one of the few Bordeaux appellations with their terroir as the appellation is well-suited for the production of red, white and sweet Bordeaux wine.

It can be a difficult region for growers who must remain vigilant as the soils can be a bit too warm for the white wine and slightly too cool for the red wine. This situation requires a lot of work and attention when it comes to the decision of when to harvest.

Graves is the area many wine historians cite as the appellation the Romans first planted with grapes to produce Bordeaux wine close to 2,000 years ago. It's amazing to consider that two thousand years ago, the Romans knew about the unique terroir in the region that would later become Pessac Leognan.

## CHATEAU LA TUILERIE BORDEAUX ROUGE 2019

One of the most important things to know about Bordeaux wines is that they are a blend of grape varieties. The red Bordeaux Blend is one of the most copied around the world and it includes Cabernet Sauvignon, Merlot, Cabernet Franc, Petit Verdot and Malbec (with tiny amount of Carménère).

In Graves, you find the vineyards planted to roughly 60% Merlot, 35% Cabernet Sauvignon and lesser amounts of Cabernet Franc, Petit Verdot, Malbec, and a few vines of Carmenere.

The red wines from Graves at their best are focused on elegance and refined character as they lack the ability to develop as much concentration as you find in Pessac Leognan. The wines are aromatic, refined and can offer smoky sensations in red wines. Most can be enjoyed in their youth without much if any cellaring.

## Tasting Notes

### Nose:

Aromas of black currant, plums, and earthy notes of wet gravel or pencil lead.

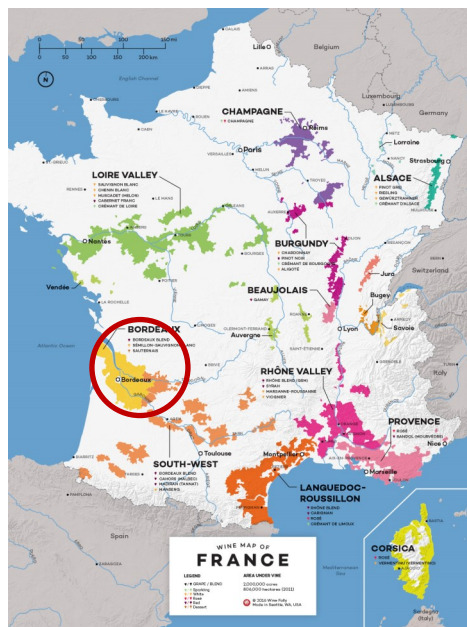
### Palate:

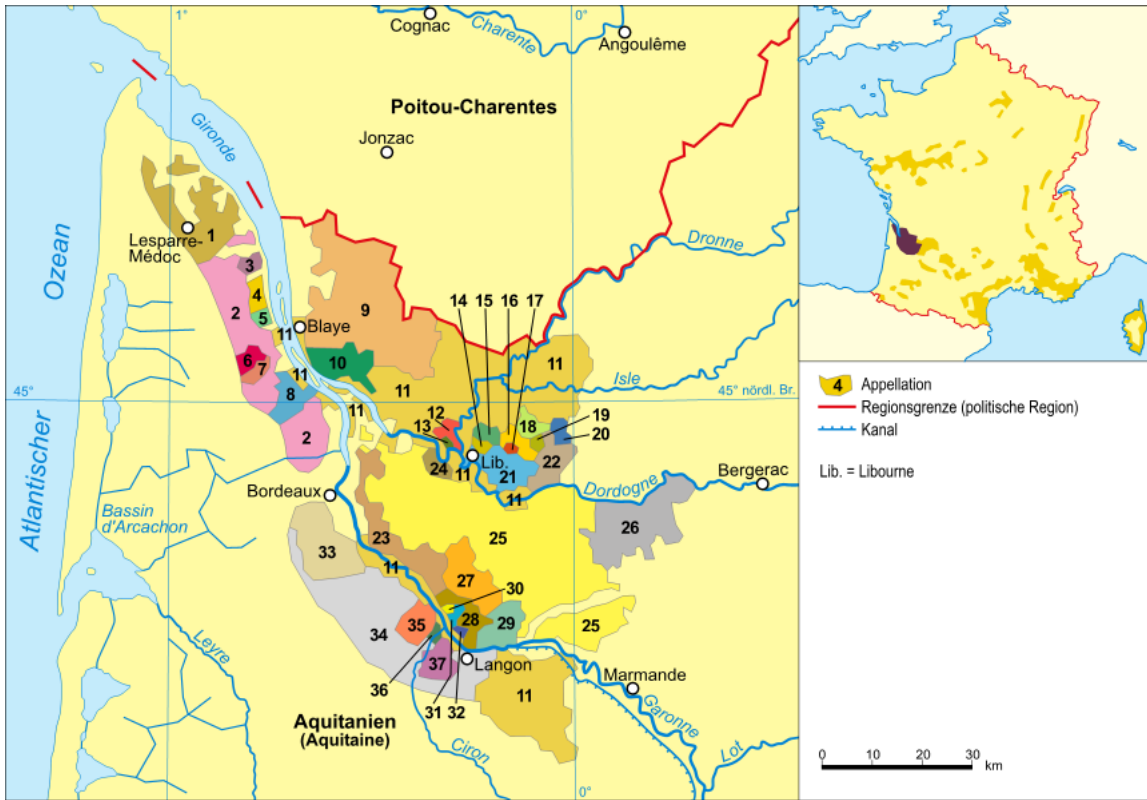
When you taste the wines, they burst with mineral and fruit notes that lead into prickly, savory, mouth-drying tannins. The tannins are often high enough that wines will age for several decades.

### Pairing:

Red Graves Bordeaux wines are perfect for a wide variety of wine and food pairings. In Bordeaux, lamb and Graves wine is one of the most popular wine and food matching ideas. However, any grilled, braised or stewed course with beef, duck, pork, veal or game dish is perfect.

**Graves A.O.C., Bordeaux,  
France**





- |  |                                      |   |                           |
|--|--------------------------------------|---|---------------------------|
| 1 = Médoc                              | 11 = Bordeaux und Bordeaux Supérieur | 21 = Saint-Emilion  | 30 = Cadillac             |
| 2 = Haut-Médoc                         | 12 = Fronsac                         | 22 = Côtes de Castillon                                     | 31 = Loupiac              |
| 3 = Saint-Estèphe                      | 13 = Canon-Fronsac                   | 23 = Premières Côtes de Bordeaux                            | 32 = Sainte-Croix-du-Mont |
| 4 = Pauillac                           | 14 = Pomerol                         | 24 = Graves-de-Vayres                                       | 33 = Pessac-Léognan       |
| 5 = Saint-Julien                       | 15 = Lalande-de-Pomerol              | 25 = Entre-Deux-Mers  | 34 = Graves               |
| 6 = Listrac-Médoc                      | 16 = Montagne-Saint-Emilion          | 26 = Sainte-Foy-Bordeaux                                    | 35 = Cérons               |
| 7 = Moulis                             | 17 = Saint-Georges-Saint-Emilion     | 27 = Bordeaux Haut-Benauge und Entre-Deux-Mers Haut-Benauge | 36 = Barsac               |
| 8 = Margaux                            | 18 = Lussac-Saint-Emilion            | 28 = Cadillac und Premières Côtes de Bordeaux               | 37 = Sauternes            |
| 9 = Côtes und Premières Côtes de Blaye | 19 = Puisseguin-Saint-Emilion        | 29 = Côtes de Bordeaux-Saint-Macaire                        |                           |
| 10 = Côtes de Bourg                    | 20 = Bordeaux-Côtes de Francs        |   |                           |